



# Comm One News

March 2006

Comm One, Inc. Phone (801) 523-9797 Fax (801) 523-5957

Volume 2006, Issue 03

## Included in This Issue:

- Comm One Call Accounting 2006 Announced
- New Graphing Features in Call Accounting Jr & Pro
- Mapping Call Data with MapPoint
- Omnitronix DL30 Memory Buffer

## Comm One Call Accounting 2006 Pro, Jr & Lite Versions Available March 20, 2006

Comm One is pleased to announce the release of Comm One Call Accounting 2006 update for all Comm One versions including Pro, Jr & Lite on March 20, 2006. The new version includes many new features including mapping and graphing of call data. With the ability to display call data graphically, we have added powerful features that make our Call Accounting more visual and easier to understand.

You can easily spot trends, see where your calls are coming from and going to, and generate professional reports that will make your telecom operation look top notch.

### New Features Include:

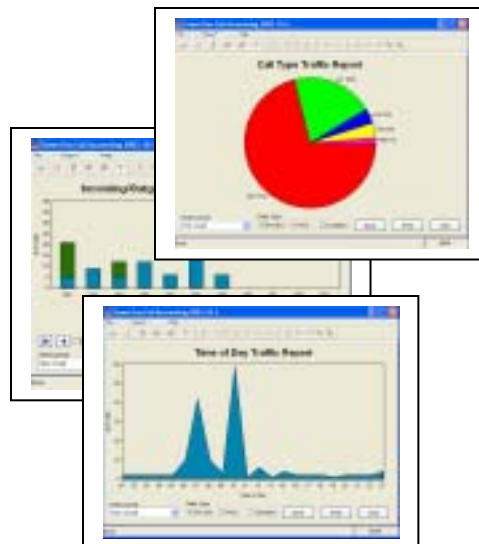
- Pie Charts, Bar Charts, Line Charts, and Area Charts on all Traffic and Summary Reports.
- Integration into Microsoft MapPoint for generating maps with call data for your city, state, or the whole country.
- New Reports, Reporting Options



## Call Accounting 2006 Pro Graphing Features

Comm One Call Accounting 2006 Pro & Jr Versions now includes graphing capabilities on all Traffic and Summary Reports. You can graph number of calls, price of calls, or call duration for any report. Reports that now have graphing features are:

- Call Cost Traffic Report
- Call Duration Traffic Report
- Trunk Group Traffic Report
- Trunk Traffic Report
- Time of Day Traffic Report
- Day of Month Traffic Report
- Type of Call Traffic Report
- Area Code Traffic Report
- City Prefix Traffic Report
- Division Summary Report
- Departmental Summary Report
- Incoming/Outgoing Summary Report
- Extension Summary Report
- Top 25 Summary Report



Copyright © 2006  
Comm One, Inc.

### Published by:

Comm One Press  
12723 Whisper Creek Cove  
Draper, UT 84020

Phone: 801-523-9797  
Fax: 801-523-5957

www.commone.com  
info@commone.com

## Map Call Records with New Microsoft MapPoint Interface

Comm One's new MapPoint Interface allows you to display call detail records over a map of your city, state, or the whole country. You can map just long distance calls, or include incoming, local, and long distance. Each call type can be a different flag or pin so you can easily see your calling patterns. You can also define your territories so that the maps are easily understood by your company's management. Other Features Include:

- Generate Map for City Only
- Generate Map for Your State
- Generate Map for USA
- Place Pin or Flag on each Call Record
- Assign different colors by call type
- User Defined Regions & Territories



## New Omnitronix DL30 Memory Buffer



### Introducing a simple, economical solution for CDR data buffering and remote access to serial devices

The Data-Link DL30 Pollable Remote Access Unit is the perfect choice for low volume sites requiring basic serial data collection. The DL30 data buffer is a simple low-cost device designed to give maximum value for minimal cost.

### Data buffering Safeguards your critical business data

The DL30 provides reliable data collection and relay of critical data between your PBX units and call accounting computers. The serial I/O port of the DL30 can be used for CDR data collection and/or bidirectional access to any connected serial device. Any data collected is safely stored in the DL30 Flash memory "file" until you wish to download it, even if power is lost to the unit.

### Versatile Configuration to meet your specific needs

The DL30 data buffer provides from 512K up to 4MBoF memory to store collected data from a PBX serial port. The DL30 can have either an internal 33.6k mode for dialup polling or an optional 10Base-T Ethernet interface for telnet and FTP polling (but not both). For inline applications (directly connected to the PBX and call accounting computer) the most economical option is to order the DL30 without either a modem or Ethernet interface.

### Serial Port Automatically Detects PBX Baud Rate

When data starts coming in from the PBX the DL30 automatically detects the incoming baud rate and adjusts the serial port settings to the correct data rate. Just plug the DL30 in and you are automatically collecting data.

### Data Reliability

The Data-Link DL30 allows data polling via Ethernet TCP/IP or dialup modem. The DL30 also offers an FTP auto-push function that automatically sends collected data to your FTP server at predefined intervals. It is fully LAN and WAN compatible. All data transferred with FTP Push is error-checked to guarantee data reliability.